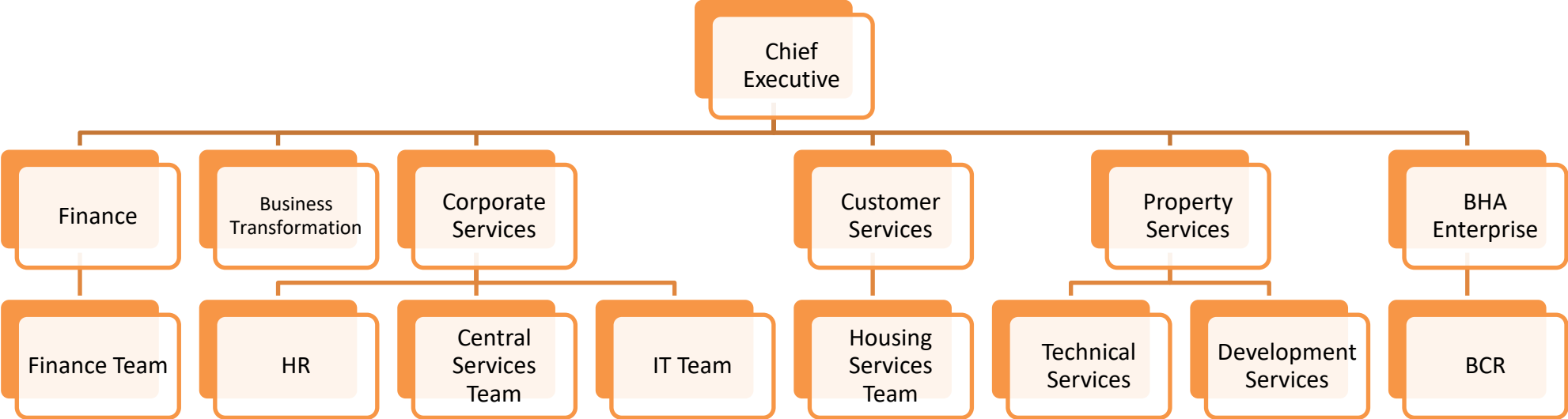
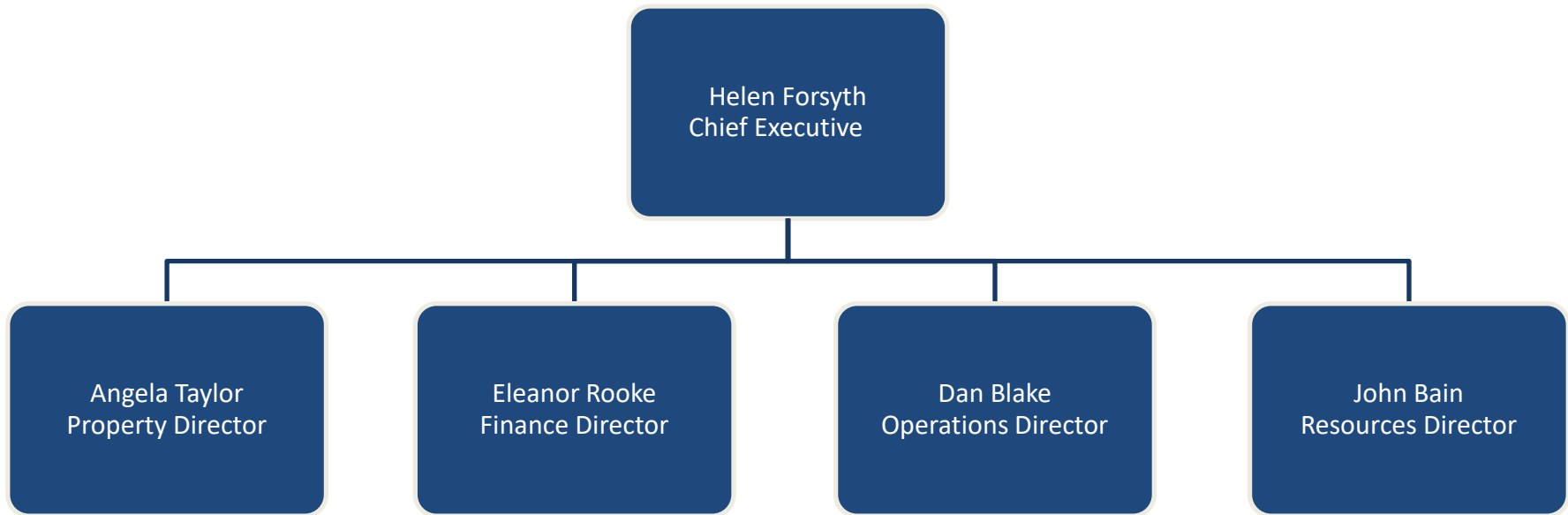


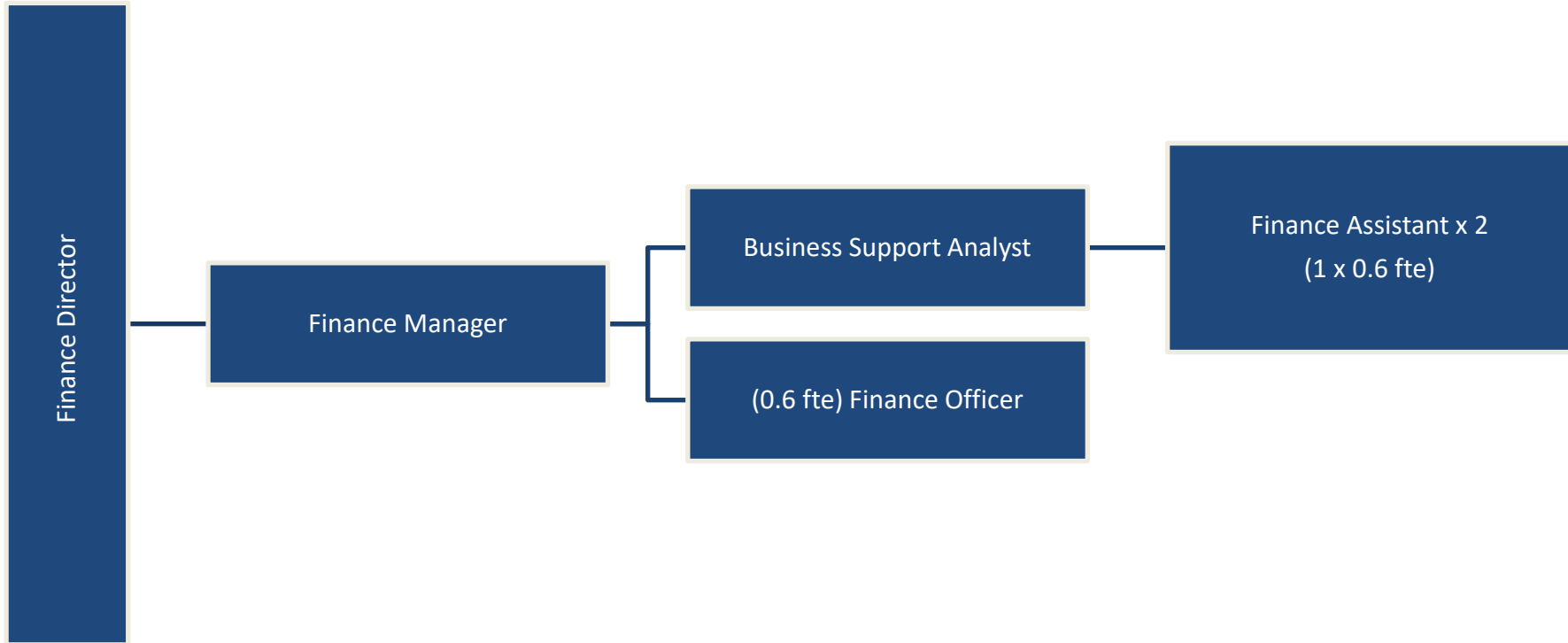
BERWICKSHIRE HOUSING ASSOCIATION - DEPARTMENTAL STRUCTURE



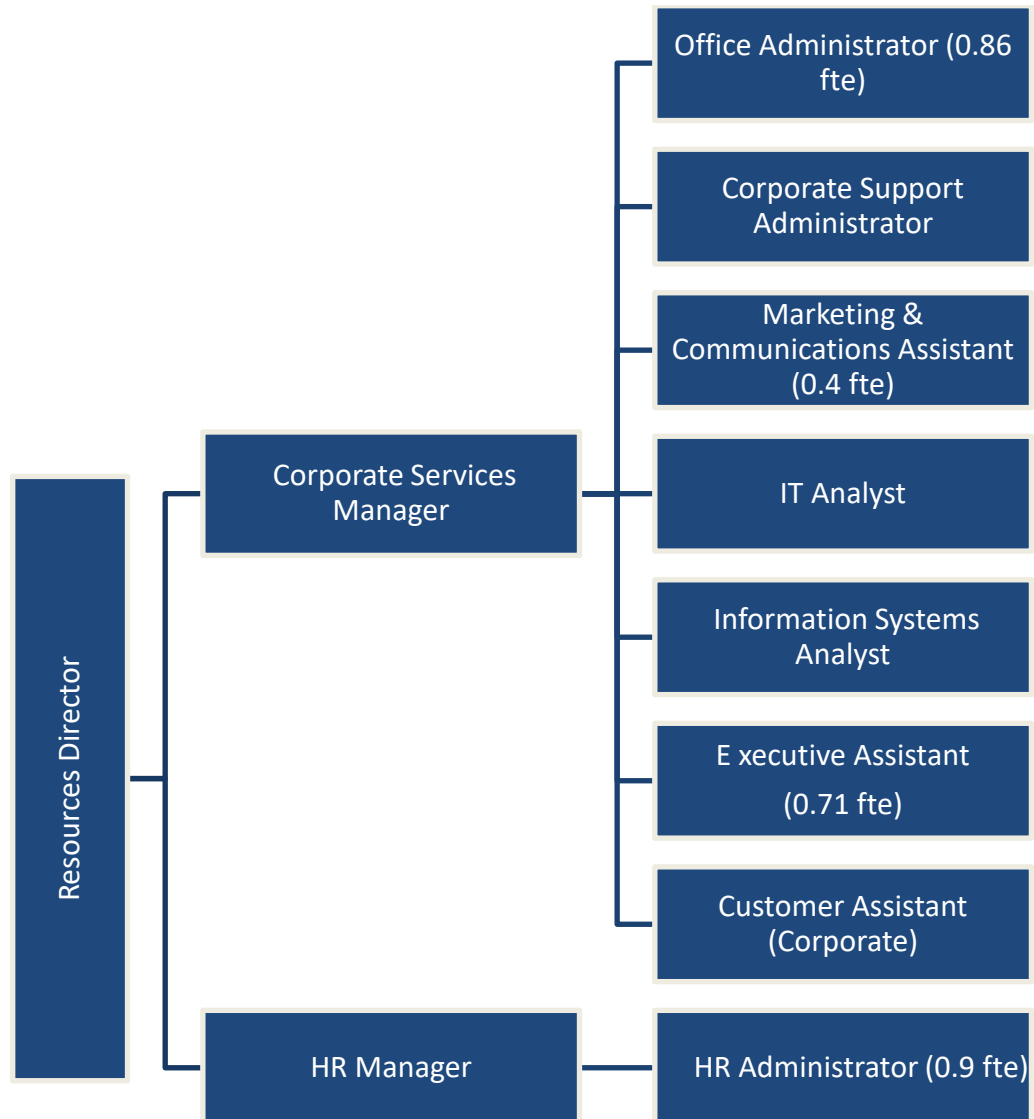
# LEADERSHIP TEAM



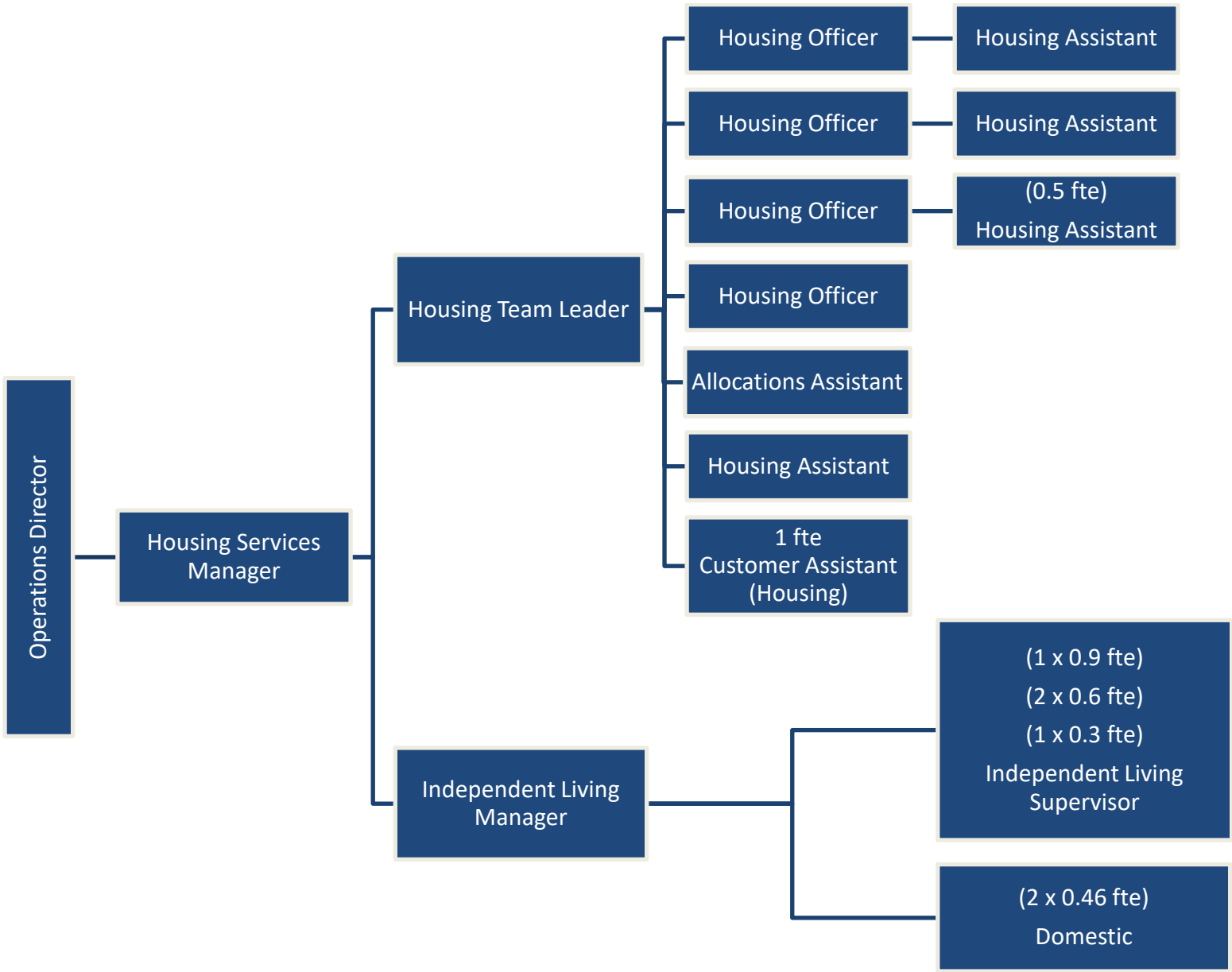
FINANCE



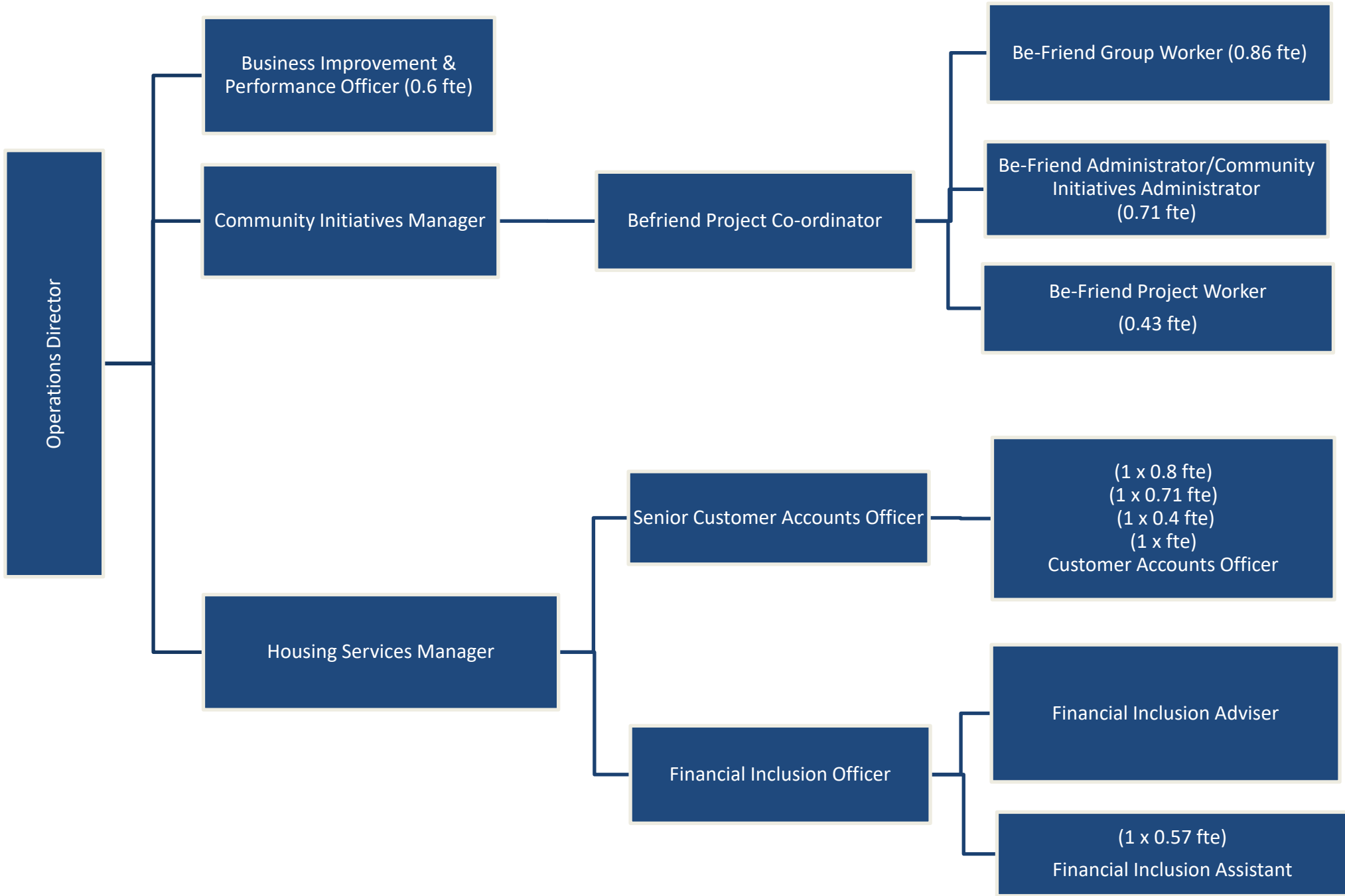
# CORPORATE SERVICES



CUSTOMER SERVICES - HOUSING SERVICES



CUSTOMER SERVICES - HOUSING SERVICES CONTINUED



Operations Director

Business Improvement & Performance Officer (0.6 fte)

Community Initiatives Manager

Befriend Project Co-ordinator

Be-Friend Group Worker (0.86 fte)

Be-Friend Administrator/Community Initiatives Administrator (0.71 fte)

Be-Friend Project Worker (0.43 fte)

Housing Services Manager

Senior Customer Accounts Officer

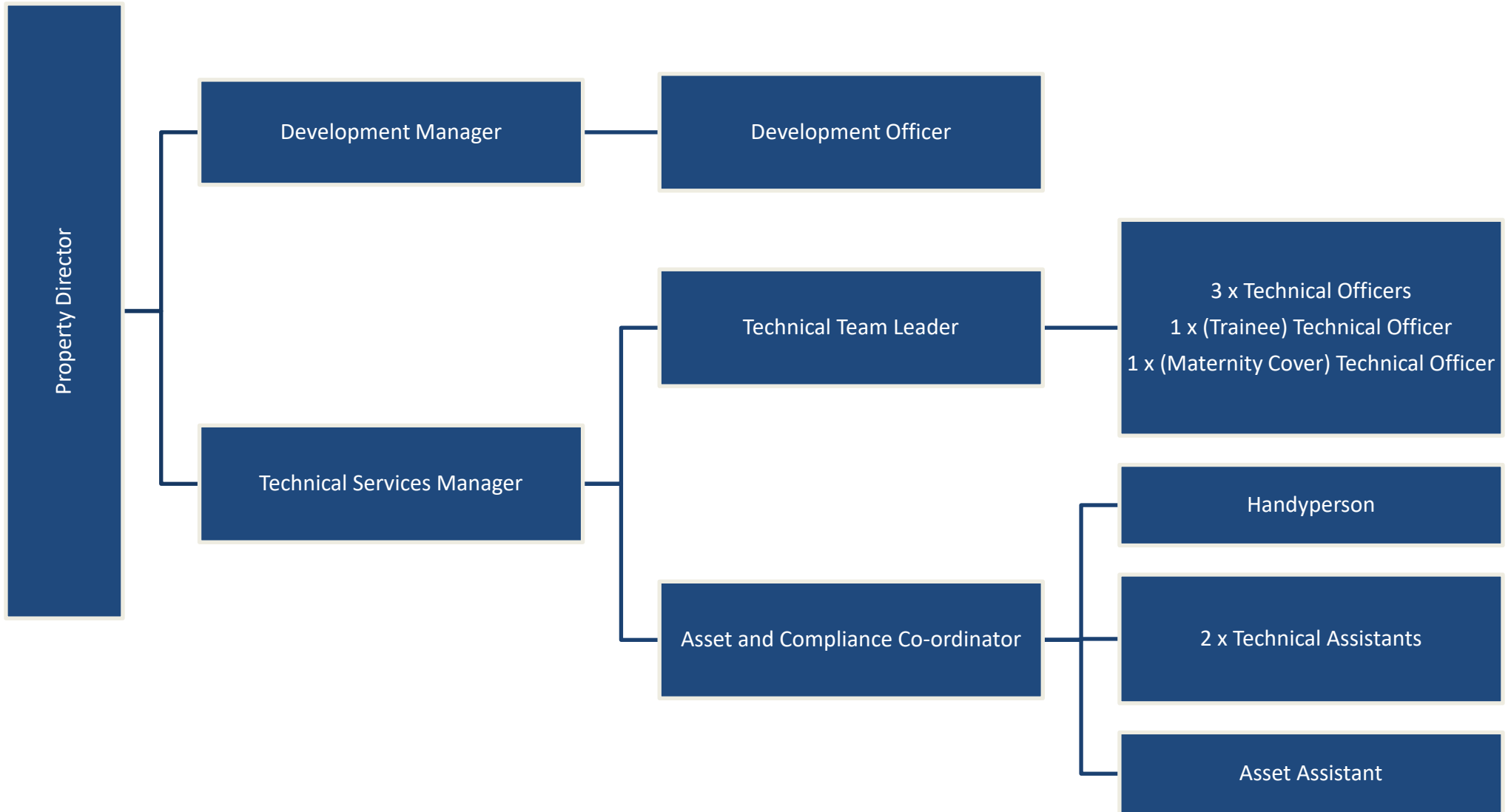
(1 x 0.8 fte)  
(1 x 0.71 fte)  
(1 x 0.4 fte)  
(1 x fte)  
Customer Accounts Officer

Financial Inclusion Officer

Financial Inclusion Adviser

(1 x 0.57 fte)  
Financial Inclusion Assistant

CUSTOMER SERVICES – TECHNICAL SERVICES



# BUSINESS TRANSFORMATION

